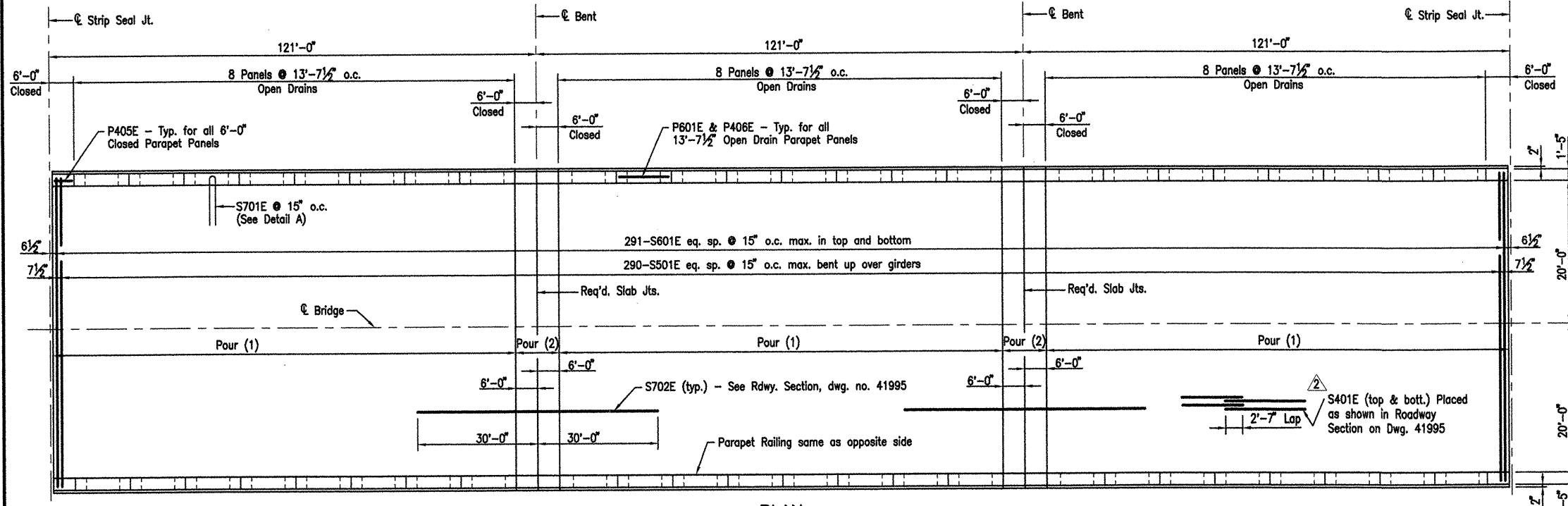
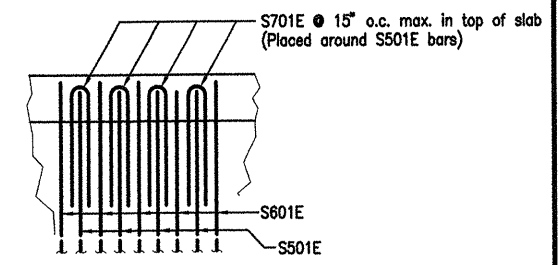


DATE REVISED	DATE FILMED	DATE REVISED	DATE FILMED	FED. ROAD NO.	STATE	FED. AID PROJ. NO.	SHEET NO.	TOTAL SHEETS
6-3-10					ARK.			
4-4-11								
				JOB NO.	110394	85	196	
				06830	363' UNIT	41997		

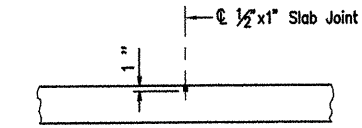


PLAN
N.T.S.

Sta. 321+52 to Sta. 328+78 (Two Units Required)

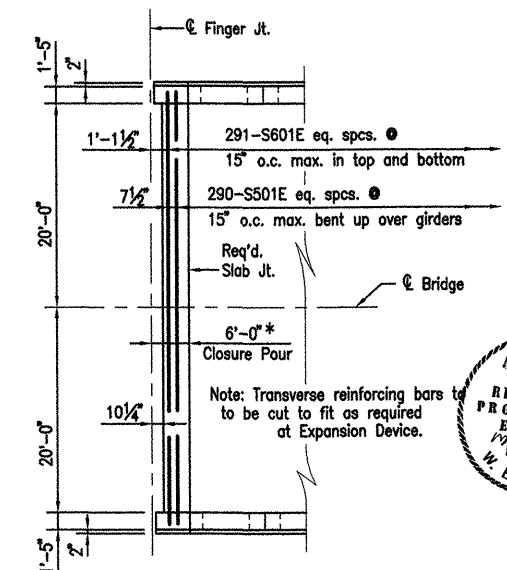


DETAIL A
N.T.S.



Use 1/2" X 1" Type 3, 4 or 6 Joint Sealer. See Subsection 501.02(h) and 501.05(j). Backer rod shall not be installed. Joint Sealer shall be measured and paid for as Class S(AE) Concrete-Bridge. Slab joints shall extend to the outside edge of the deck slab. Slab joints shall be installed before the parapet railing is poured. If slab joints are to be sawed, they shall be sawed as soon as the concrete has sufficiently set to allow sawing of the joint without damage to the slab. Slab joints shall be placed at all pouring sequence construction joints and required slab joint locations.

SLAB JOINT DETAIL
N.T.S.



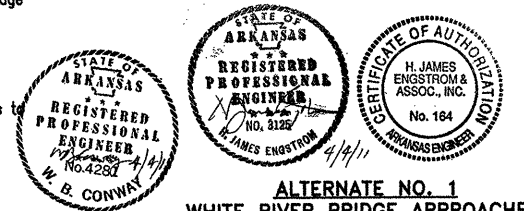
DETAILS FOR END OF UNIT AT FINGER JOINT
N.T.S.

*After all Pours (1) and Pours (2) on both Units adjacent to Joint are complete, Joint Closure Pours on each side of Joint shall be poured simultaneously. 48 hours shall elapse between end of last Pour (2) and start of Joint Closure Pour.

BAR LIST PER 363' UNIT				Bending Diagrams (Dimensions are out to out of bars.)	
Mark	No. Req'd.	Length	Dia. Pin		
S401E	1,017	42'-6"	Str.		
S501E	290	43'-10 1/2"	Str.		
S601E	582	42'-10"	Str.		
S701E	580	12'-10"	Str.		
S702E	128	60'-0"	Str.		
P401E	660	6'-4"	2"		
P402E	660	5'-8"	2"		
P403E	384	5'-11"	2"		
P404E	384	3'-1"	2"		
P405E	72	5'-8"	Str.		
P406E	192	13'-4"	Str.		
P601E	240	13'-4"	Str.		
D401	75	12'-10"	2"		
D402	30	10'-3"	2"		
D403	60	14'-5"	2"		
D404	50	13'-11"	2"		
D405	20	11'-11"	2"		
D501	250	6'-4"	Str.		
D502	120	4'-11"	Str.		
D503	50	5'-0"	Str.		
D601	48	20'-6"	Str.		

- 1 Revised Quantity by HJE/MM
HJE 6-3-10
- 2 Added S401E Bar Lap Splice Detail & Revised Bar List by HJE/MM
WBC 4-4-11

NOTE: Pours with the same number may be placed simultaneously or separately. All Pours (1) must be placed before Pours (2) can be placed. 48 hours shall elapse between the end of a pour and the start of the next pour. 72 hours shall elapse between the end of a pour and the start of an adjacent pour. Any railing pours made before the entire slab unit has been placed must be approved by the Bridge Engineer. Concrete in bridge superstructure shall be consolidated for the entire pour before any concrete has taken its initial set. This may require the use of a retarding agent. The Contractor must obtain approval from the Bridge Engineer for any deviations from the pouring sequence.



ALTERNATE NO. 1
WHITE RIVER BRIDGE APPROACHES

DETAILS OF 363'-0" CONT.
PRESTRESSED CONCRETE GIRDER UNITS
(SHEET 4 OF 7)

WHITE RIVER STR. & APPRS.
(CLARENDON) (PH 1) (F)
MONROE COUNTY

ROUTE 79 SEC. 13
ARKANSAS STATE HIGHWAY COMMISSION
LITTLE ROCK, ARK.

Engstrom/Modjeski and Masters, Inc.

DRAWN BY: GPT DATE: Nov. 07 FILENAME: b11039411_s04
CHECKED BY: YO DATE: Nov. 01 SCALE: 1/16" = 1'-0"
DESIGNED BY: GPT DATE: Nov. 01
BRIDGE NO. 06830 DRAWING NO. 41997

BRIDGE ENGINEER

ACAD SCALE: 1/16" = 1'-0"

COMPANY 1999 JOBS 99-044 AHTD\WHITERIVER\JOB 110394\363sibdetat1